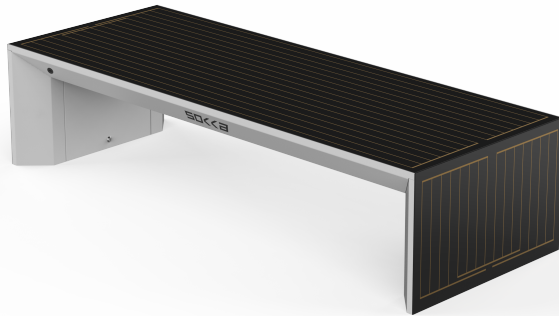


From collection

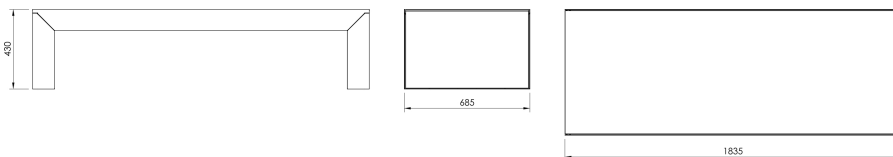


180 cm wide Smart bench created in cooperation with SOKKA design studio, made of stainless steel and tempered glass panels with photovoltaic cells.

The LSO263.00 model is equipped with a Smart module by SEEDiA with a dedicated online panel for managing the functions of the bench. Smart options include LED backlight and USB charger and the option of expanding with a WiFi module, smog sensor, inductive charger, RGB lighting, audio module and dusk sensor.

The LIGHTBENCH implements the idea of eco-awareness by compensating its own carbon footprint with the production of green energy. Katarzyna and Wojtek Sokołowski from the SOKKA studio have thought over the concept of full recycling of the product at the end of its life cycle already at the design stage.

SOKKA LIGHTBENCH - technology of tomorrow available today.



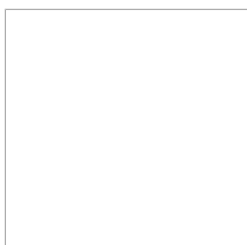
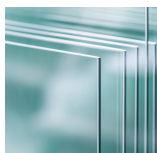
Dimensions and materials available below.

MATERIALS



GLASS

GLASS



From collection



POWDER
COATED STEEL



STAINLESS
STEEL



**www.fulcosystem.
com**

contact@fulco.pl

phone no.: +48 32 305
05 80