

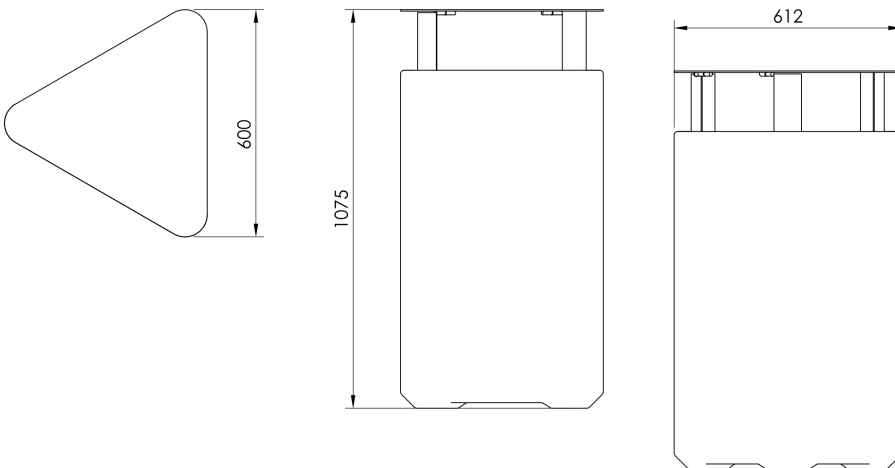
From collection **BEVEL**



BEVEL bins combine raw concrete with a geometric form created by vertically extending simple shapes, making them stand out in both park and urban spaces.

Model KBE225 is based on a triangular form and is topped with a rain canopy.

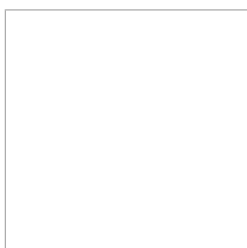
The 100-litre bin is equipped with a stainless steel ring for attaching a waste bag.



MATERIALS



CONCRETE



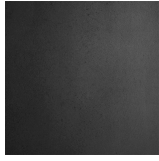
FULCO

BEVEL litter bin | **KBE225**

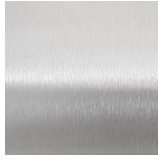
From collection **BEVEL**



POWDER
COATED STEEL



STAINLESS
STEEL



www.fulcosystem.com

contact@fulco.pl

phone no.: +48 32 305
05 80